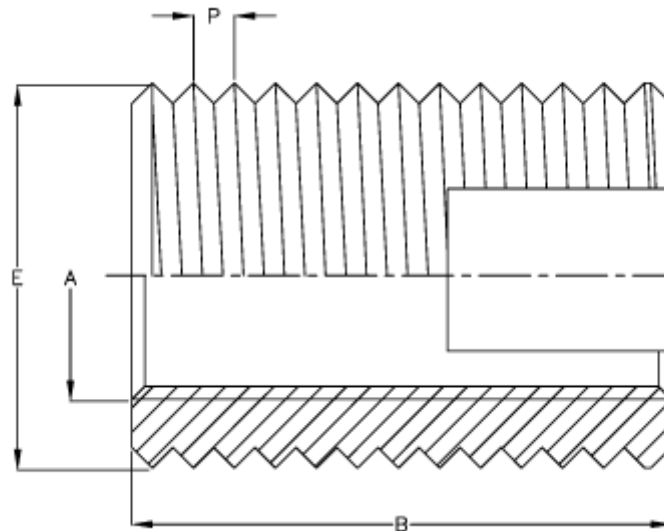


Article number: 12303000100110
Description: KLEE-coil 303 000 100.110
M10 Hardened/zinc-plated blue

Measures



Female thread A	= M10
Length B	= 15
Male thread E	= 12.0
Min hole depth blind hole	= 18
Recommended bore diameter (hard mat.)	= 10.9 to 11.2
Recommended bore diameter (soft mat.)	= 10.6 to 10.8
Thread pitch P	= 2.00
Type	= 303 0 100..